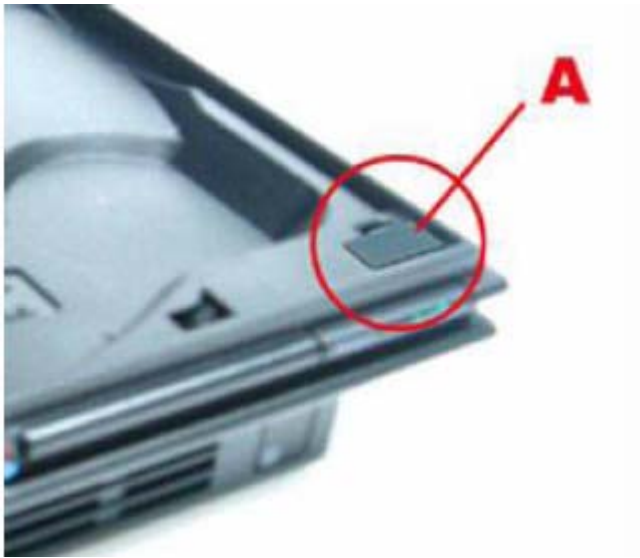


Installation of Magic Switch Pro V3

Note:

1. You only need to install one of Tool C, Tool D and Tool E. Do not install all of them.
2. Try Tool E first, since it doesn't require open the console and void the warranty.
3. Tool D is designed for the latest model of PS2 Slimline, such as Ceramic White and Satin Silver.

Installation of Tool A:



Stick Tool A in the hole over the ON/RESET button of the console.

Installation of Tool B



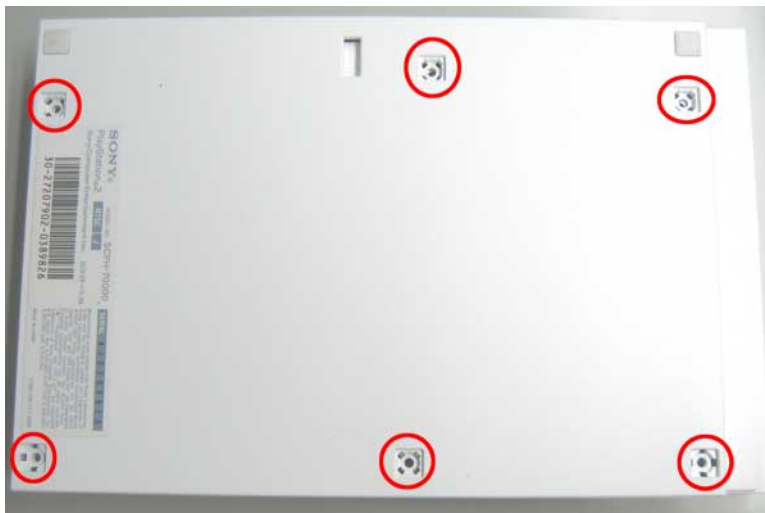
Move the disc break to right and hold it. Stick Tool B to the left side of the disc break.

Installation of Tool C

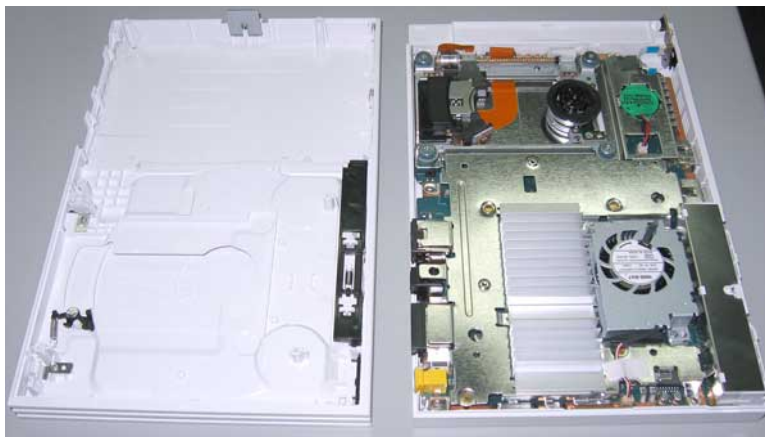


Put Tool C straightly into the hole where the spring is.

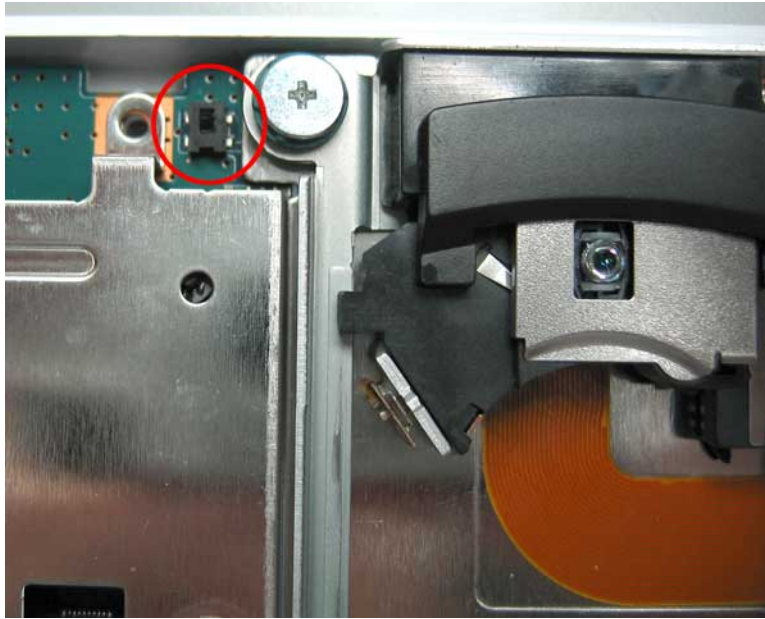
Installation of Tool D



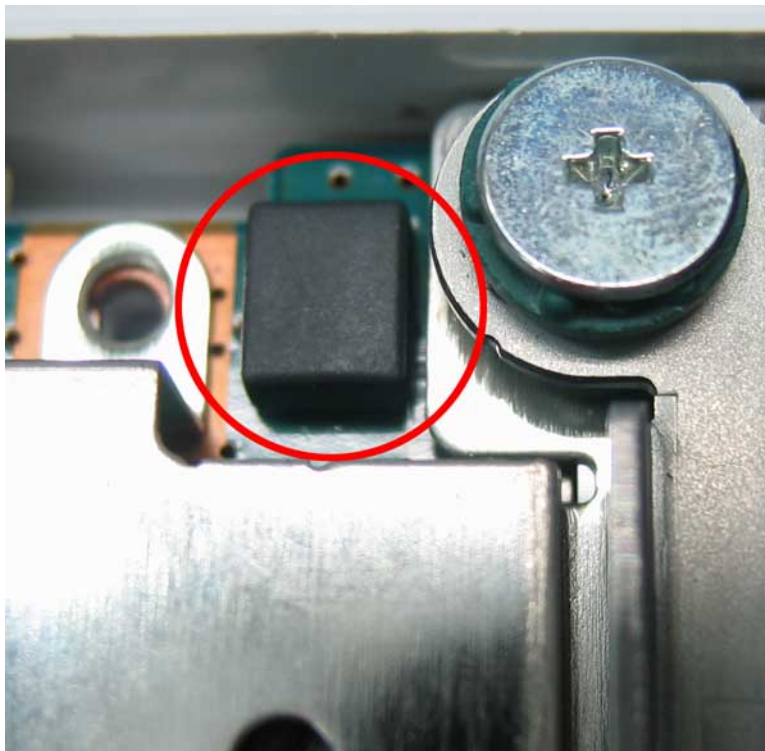
Unscrew the case of PS2 Slim.



Open the case.



Find the micro switch which is near the Lens.



Put the Tool D on the switch like the photo shown above. Then, you can re-attach the case to the console. Next, you can install the Tool A and Tool B. You can refer to the pictures below to install the Tool A and Tool B

Installation of Tool E



Put a disc into the console, push the ON/RESET button and insert Tool E. Release the ON/RESET button, if Tool C is installed correctly, the disc automatically rotates. Adjust the position a little bit to left or right if the disc doesn't rotate.